



Road Management Services

Working on behalf of



0300 123 5000  
[www.nationalhighways.co.uk](http://www.nationalhighways.co.uk)

5<sup>th</sup> February 2025

### **Major Structures Maintenance on A419/A417**

We are planning essential maintenance at A419/A417. These works will affect various sections of the A419/A417, the remaining sections of the A419/A417 outside of the works area shall operate as usual.

### **What are the benefits to road users?**

Our work will provide a safer and smoother journey for road users.

### **What work is being carried out?**

The work being delivered is essential maintenance to the structures and surfacing.

### **When and where will the work be carried out? (Traffic restrictions – check before you travel)**

There will be closures on the following dates:

- Full 24-hour closure: **Friday 14<sup>th</sup> February from 20:00 to Saturday 15<sup>th</sup> February 20:00 – A419 Southbound Closure between Burford Road Interchange and Spine Road Junction** (Diversion Route 6 Southbound)
- Weeknight closures ONLY (Monday to Thursday - from 20:00 hours until 06:00 hours the following morning): **Monday 24<sup>th</sup> February from 20:00 to Friday 28<sup>th</sup> February 06:00 – A419 Northbound and Southbound Closure between A420 White Hart Roundabout and Turnpike/Lady Lane Junction** (Diversion Route 12 Northbound and Southbound)
- Full weekend closure: **Friday 28<sup>th</sup> February from 20:00 to Monday 3<sup>rd</sup> March 05:00 – A419 Northbound and Southbound Closure between Commonhead Roundabout and A420 White Hart Roundabout** (Diversion Route 11 Northbound and Southbound)
- Full weekend closure: **Friday 7<sup>th</sup> March from 20:00 to Monday 10<sup>th</sup> March 06:00 – A419 Closure Northbound and Southbound between Commonhead Roundabout and A420 White Hart Roundabout** (Diversion Route 11 Northbound and Southbound)

- Full weekend closure: **Friday 28<sup>th</sup> March from 20:00 to Monday 31<sup>st</sup> March 06:00 – A419 Southbound Closure between Spine Road Junction and Lady Lane Junction**  
(Diversion Route 14 Southbound)

Please note that the A419/A417 will be fully operational as usual outside of the specified hours. Diversion routes will be signed, and signage will also be in place before the start of works as a reminder.

### **Noise disruption**

Due to the nature of the work we are carrying out there will be times when the work will cause some noise disruption. Every effort will be made to keep the noise to a minimum and we will plan the work to take place at times which will cause least disruption, but please note that this will not always be possible.

### **Diversion routes**

The proposed diversion routes for the closure are outlined below. Maps are also attached to this letter to indicate the route.

#### **Diversion Route 6 Southbound – A419 Closure between Burford Road Interchange and Spine Road Junction - Friday 14<sup>th</sup> February from 20:00 to Saturday 15<sup>th</sup> February 20:00**

From the A417 Southbound Carriageway take the Burford Road Interchange exit slip and take the 4<sup>th</sup> exit at the roundabout over the A417 Carriageway signed Cirencester A429, Stroud (A419).

At 2<sup>nd</sup> roundabout take 1<sup>st</sup> exit signed Cirencester A429, Stroud (A419).

At 3<sup>rd</sup> roundabout take 1<sup>st</sup> exit signed The South West, Stroud, Swindon A419, Chippenham (A429).

At 4<sup>th</sup> roundabout take 1<sup>st</sup> exit signed Swindon A419.

At 5<sup>th</sup> roundabout take 1<sup>st</sup> exit signed Swindon A419.

At 6<sup>th</sup> roundabout take 2<sup>nd</sup> exit signed (M4), Swindon A419.

At 7<sup>th</sup> roundabout, South Cerney Junction, take 1<sup>st</sup> exit and continue over the A419 Carriageway.

At 8<sup>th</sup> roundabout take 3<sup>rd</sup> exit onto A419 Southbound entry slip road.

**Diversion Route 11 Northbound – A419 Closure between Commonhead Roundabout Junction and A420 White Hart Roundabout Junction – Friday 28<sup>th</sup> February from 20:00 to Monday 3<sup>rd</sup> March 05:00 & Friday 7<sup>th</sup> March from 20:00 to Monday 10<sup>th</sup> March 06:00**

From the Commonhead northbound exit slip take the 1<sup>st</sup> exit at the Commonhead roundabout signed Swindon A4259.

At Coate Roundabout take 3<sup>rd</sup> exit onto Queens Drive signed town centre A4259.

At Drakes roundabout take 2<sup>nd</sup> exit onto Drakes Way Signed Burford (A361).

At Greenbridge roundabout take 3<sup>rd</sup> exit onto Slade Drive signed Oxford (A420).

At White Hart roundabout 5<sup>th</sup> exit signed Cirencester (A419N).

At island 1<sup>st</sup> exit onto slip signed Cirencester A419.

**Diversion Route 11 Southbound – A419 Closure between A420 White Hart Roundabout Junction and Commonhead Roundabout Junction – Friday 28<sup>th</sup> February from 20:00 to Monday 3<sup>rd</sup> March 05:00 & Friday 7<sup>th</sup> March from 20:00 to Monday 10<sup>th</sup> March 06:00**

From the White Hart Southbound Exit Slip roundabout take the 4<sup>th</sup> exit onto Oxford Road signed Town Centre A4312.

At Greenbridge roundabout take the 2<sup>nd</sup> exit onto Drakes Way signed Town Centre A4312.

At Drakes roundabout take 1<sup>st</sup> exit onto Queens Drive signed Walcot E A4259.

At Coate roundabout take 3<sup>rd</sup> exit onto Marlborough Road signed Marlborough A4259.

At Commonhead roundabout take 4<sup>th</sup> exit signed Motorway M4.

**Diversion Route 12 Northbound – A419 Closure between A420 White Hart Roundabout Junction and Turnpike Junction – Monday 24<sup>th</sup> February from 20:00 to Friday 28<sup>th</sup> February 06:00 (Weeknight Closures ONLY)**

From the A419, exit at the A420 Northbound Exit Slip and then take the 2<sup>nd</sup> exit at the first roundabout signed A4312.

At White Hart roundabout take the 1<sup>st</sup> exit on to the Oxford Road signed Swindon, Dorcan and Stratton.

At Lady Margaret Traffic Lights continue forward signed A4312 Town Centre.

At Greenbridge roundabout take the 4<sup>th</sup> exit signed Highworth (A361), Cirencester (A419).

At the New Inn roundabout take the 1<sup>st</sup> exit onto Bridge End Road signed Elgin B4143.

At Gypsy Lane roundabout take 2<sup>nd</sup> exit onto Gypsy Lane signed Elgin B4143.

At next roundabout take 2<sup>nd</sup> exit onto Gypsy Lane signed Gorsehill.

At Chapel roundabout take 3<sup>rd</sup> exit signed Cirencester A4311 (A419).

At Elgin Drive roundabout take 1<sup>st</sup> exit signed Cirencester A4311 (A419).

At Kembrey Park roundabout take 2<sup>nd</sup> exit signed Cirencester (A419).

At Headlands roundabout take 1<sup>st</sup> exit signed Cirencester A4311 (A419).

At Moonrakers roundabouts take 2<sup>nd</sup> then 1<sup>st</sup> exits onto Cricklade Road signed Cirencester A4311 (A419), through next set of traffic Lights then follow on to Arkwright Junction.

At Arkwright Traffic Lights, follow straight on signed (A419) Cirencester.

At the next set of Traffic Lights, merge to the right and follow signs for (A419) Cirencester.

Then at next set of Traffic Lights, stay in right hand lane and Re-Join (A419) Cirencester.

**Diversion Route 12 Southbound – A419 Closure between Lady Lane Junction and A420 White Hart Roundabout Junction – Monday 24<sup>th</sup> February from 20:00 to Friday 28<sup>th</sup> February 06:00 (Weeknight Closures ONLY)**

From the Lady Lane Southbound Exit Slip turn right at 1<sup>st</sup> set of traffic lights signed Swindon A4311.

At 2<sup>nd</sup> set of traffic lights turn left and follow road signed Swindon N & W, A4311.

At 3<sup>rd</sup> set of traffic lights carry straight on through, taking 1<sup>st</sup> exit left following Town Centre.

At 4<sup>th</sup> set of traffic lights carry straight on still following Town Centre.

At Moonrakers roundabouts take 2<sup>nd</sup> then 1<sup>st</sup> exit signed Town Centre A4311.

At Headlands roundabout take 2<sup>nd</sup> exit signed Town Centre.

At Kembrey Park roundabout take 2<sup>nd</sup> exit signed Gorse Hill A4311.

At Elgin Drive roundabout take 2<sup>nd</sup> exit Town Centre (M4).

At Chapel roundabout take 1<sup>st</sup> exit onto Gypsy Lane signed Burford (A361).

At Murdoch roundabout take 2<sup>nd</sup> exit signed BMW Group.

At Gypsy Lane roundabout take 1<sup>st</sup> exit onto Bridge End Road signed BMW Group.

At New Inn roundabout take the 2<sup>nd</sup> exit signed Oxford (A420), Motorway (M4).

At Greenbridge roundabout take the 1<sup>st</sup> exit on to Slade Drive signed Oxford (A420), (M4).

At Lady Margaret traffic lights carry straight on.

At White Hart roundabout take the 4<sup>th</sup> exit signed (M4), A419 (S) to rejoin the A419 Southbound Carriageway.

**Diversion Route 14 Southbound – A419 Closure between Spine Road Junction and Lady Lane Junction – Friday 28<sup>th</sup> March from 20:00 to Monday 31<sup>st</sup> March 06:00**

From the A419 Southbound Carriageway take the Spine Road Junction exit slip road.

At 1<sup>st</sup> roundabout take 4<sup>th</sup> exit and travel along the B4696 Spine Road East to Aston Keynes. Continue to Royal Wootton Bassett using the B4042.

At 2<sup>nd</sup> roundabout take 2<sup>nd</sup> exit signed M4, Swindon, Interface, Woodshaw, A3102.

At 3<sup>rd</sup> roundabout take 1<sup>st</sup> exit signed M4, Swindon, A3102.

At 4<sup>th</sup> roundabout take 2<sup>nd</sup> exit signed Swindon, A3102.

At 5<sup>th</sup> roundabout take 2<sup>nd</sup> exit signed Town Centre, A3102.

At 6<sup>th</sup> roundabout take 2<sup>nd</sup> exit signed Great Western, North Star, Stratton, B4006.

At 7<sup>th</sup> roundabout take 1<sup>st</sup> exit to continue on B4006.

At 8<sup>th</sup> roundabout take 2<sup>nd</sup> exit signed Cirencester A419, Shaw, Hillmead.

At 9<sup>th</sup> roundabout take 2<sup>nd</sup> exit signed Cirencester A419, Hillmead, B4534.

At 10<sup>th</sup> roundabout take 2<sup>nd</sup> exit signed Cirencester A419, Sparcells, B4534.

At 11<sup>th</sup> roundabout take 2<sup>nd</sup> exit to continue on B4534.

At 12<sup>th</sup> roundabout take 2<sup>nd</sup> exit signed Cirencester A419, North Swindon, B4534.

At 13<sup>th</sup> roundabout take 2<sup>nd</sup> exit signed Cirencester A419, North Swindon, Blunsdon, B4534.

Continue along B4534 onto entry slip road to A419 Southbound Carriageway.

**Contact**

Fatima Alawad (Stakeholder Support Manager)

**Email:** Fatima.Alawad@wsp.com

Yours sincerely,

A handwritten signature in black ink on a light yellow background. The signature is cursive and appears to read 'M Jackson'.

Mike Jackson  
**Road Manager**

Enc.

Diversion Route Maps

**ROUTE 6**

**A417 Southbound Closed  
Between  
Burford Road Interchange  
And  
Spine Road Junction**



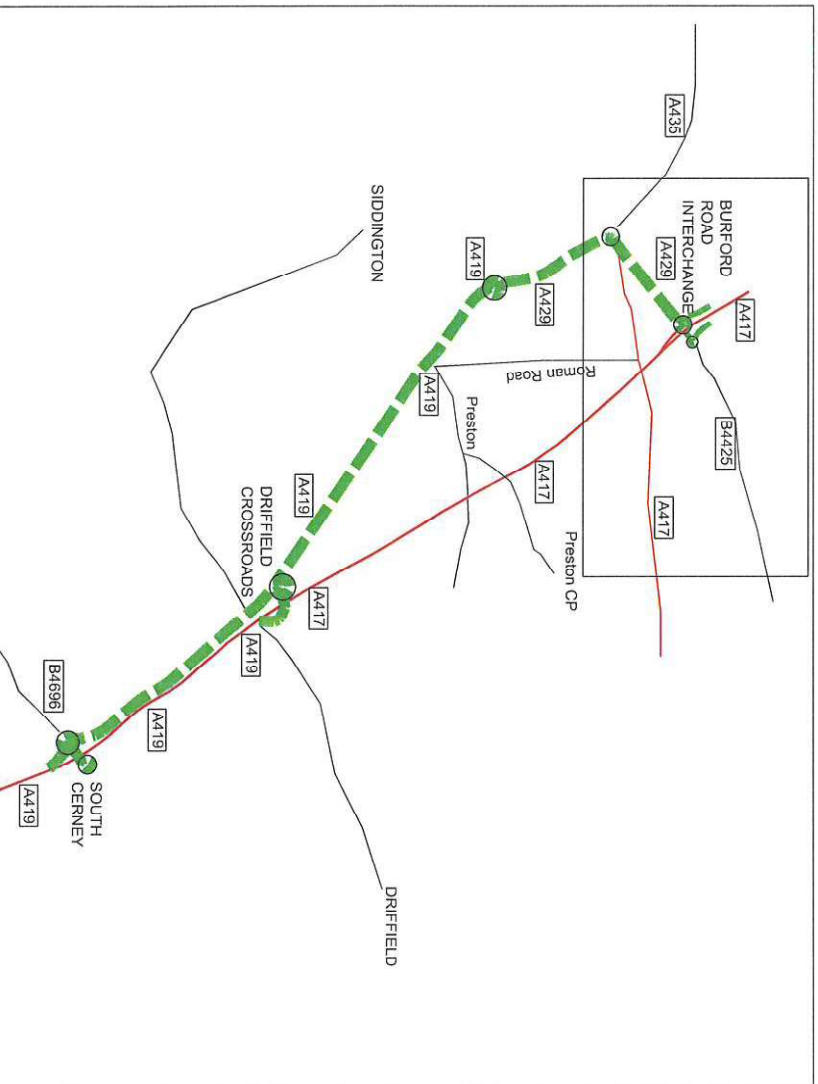
# CLOSED BETWEEN CIRENCESTER (BURFORD ROAD) AND SPINE ROAD JUNCTION.

Diversion Route  
Symbol



**Action Points**  
 Step 1: Close A417/A419 Southbound carriageway at Burford Road Interchange.  
 Step 2: Open trigger signs at Burford Road Interchange Exit Slip Road.  
 Reverse procedure at end of closure.

A417 Southbound Main Carriageway at Burford Road Interchange Southbound Exit Slip Road.  
 Standard Road Closure to TMC requirements



This route was agreed as the preferred option by the following parties during 2007:  
 Highways Agency, R.M.S. Gloucestershire Police and Gloucester County Council



Diversion Route 6 (Southbound)  
 Oct 2008

**ROUTE 11**

**A419 Northbound Closed  
Between  
Commonhead Roundabout  
And  
A420 White Hart Roundabout**





# A419 NORTHBOUND CLOSED BETWEEN COMMONHEAD ROUNDABOUT AND WHITE HART ROUNDABOUT.



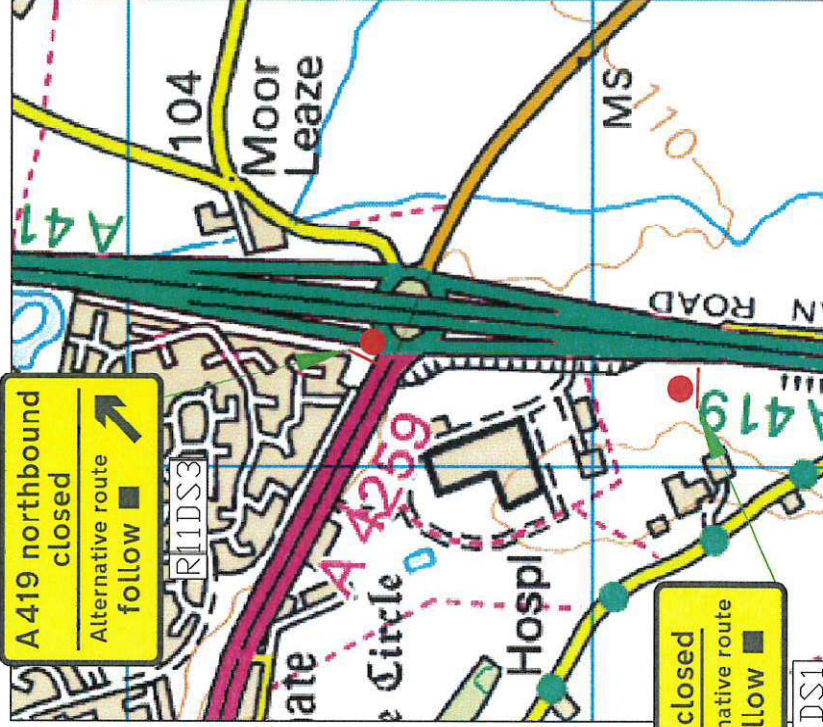
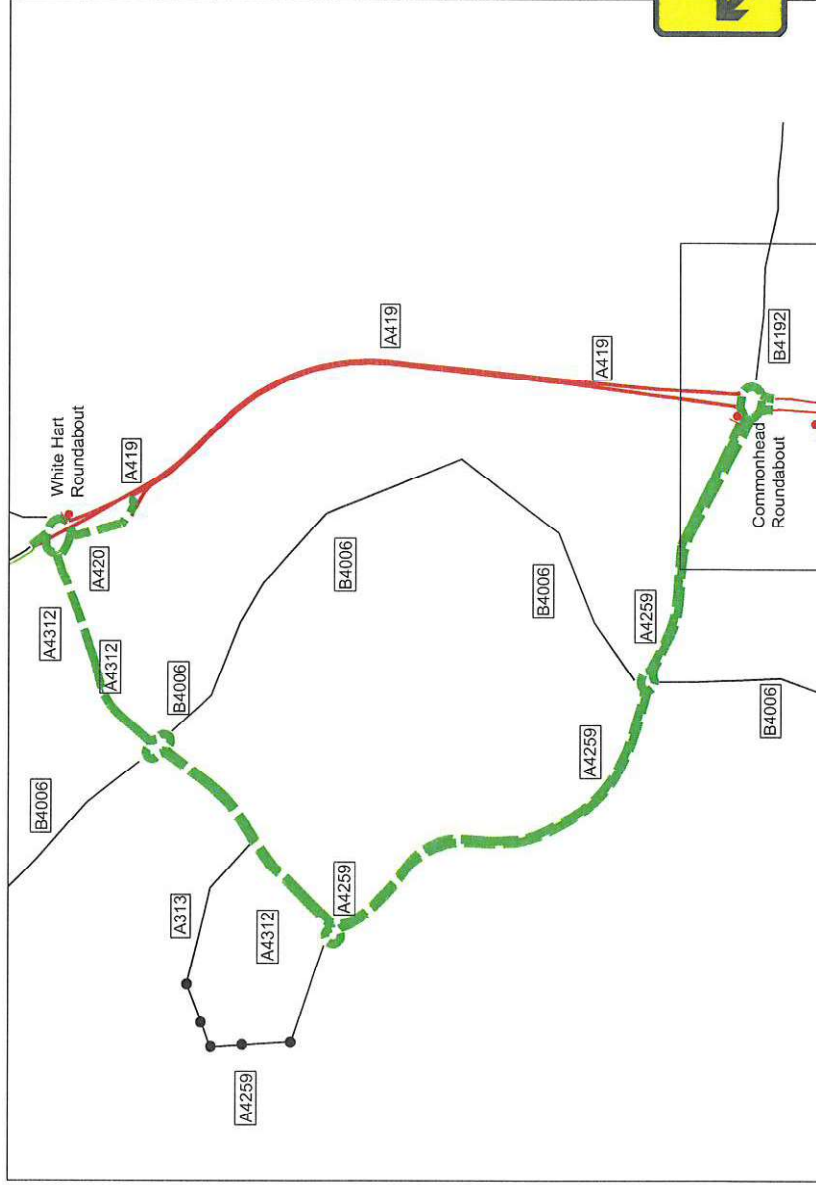
Diversion Route Symbol

### Action Points

- Step 1: Close A419 at Northbound carriageway at Commonhead roundabout junction with A4259.
- Step 2: Open trigger signs at Commonhead roundabout Northbound Exit Slip Road.
- Reverse procedure at end of closure.

A419 Northbound Carriageway at Commonhead Roundabout.

Standard Road Closure to TMC requirements



This route was agreed as the preferred option by the following parties during 2007:  
Highways Agency, R.M.S. Gloucestershire Police and Gloucester County Council



**ROUTE 11**

**A419 Southbound Closed  
Between  
A420 White Hart Roundabout  
And  
Commonhead Roundabout**





# A419 SOUTHBOUND CLOSED BETWEEN WHITE HART ROUNDABOUT AND COMMONHEAD ROUNDABOUT.



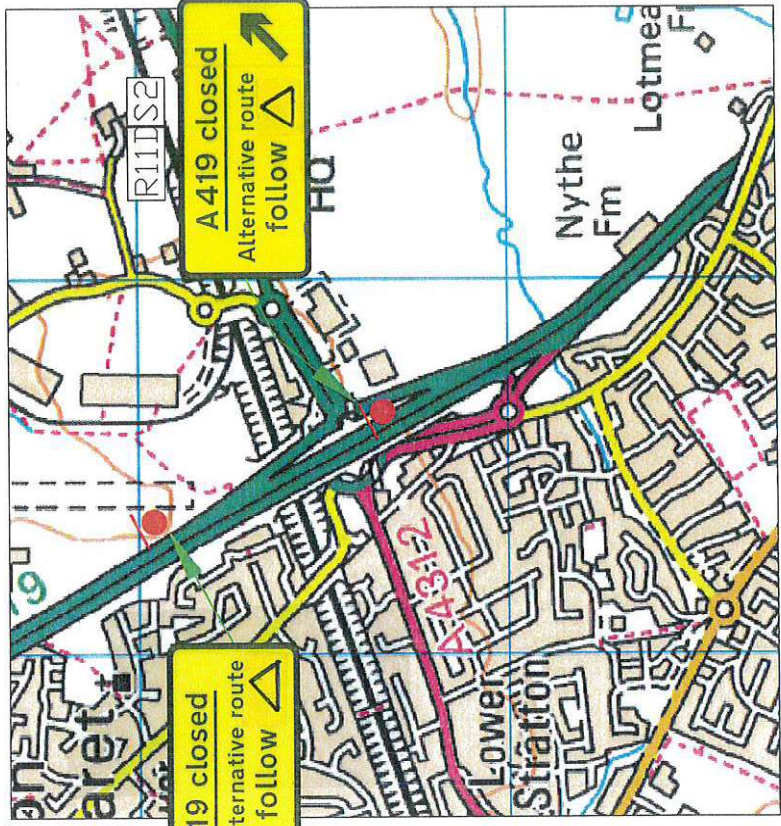
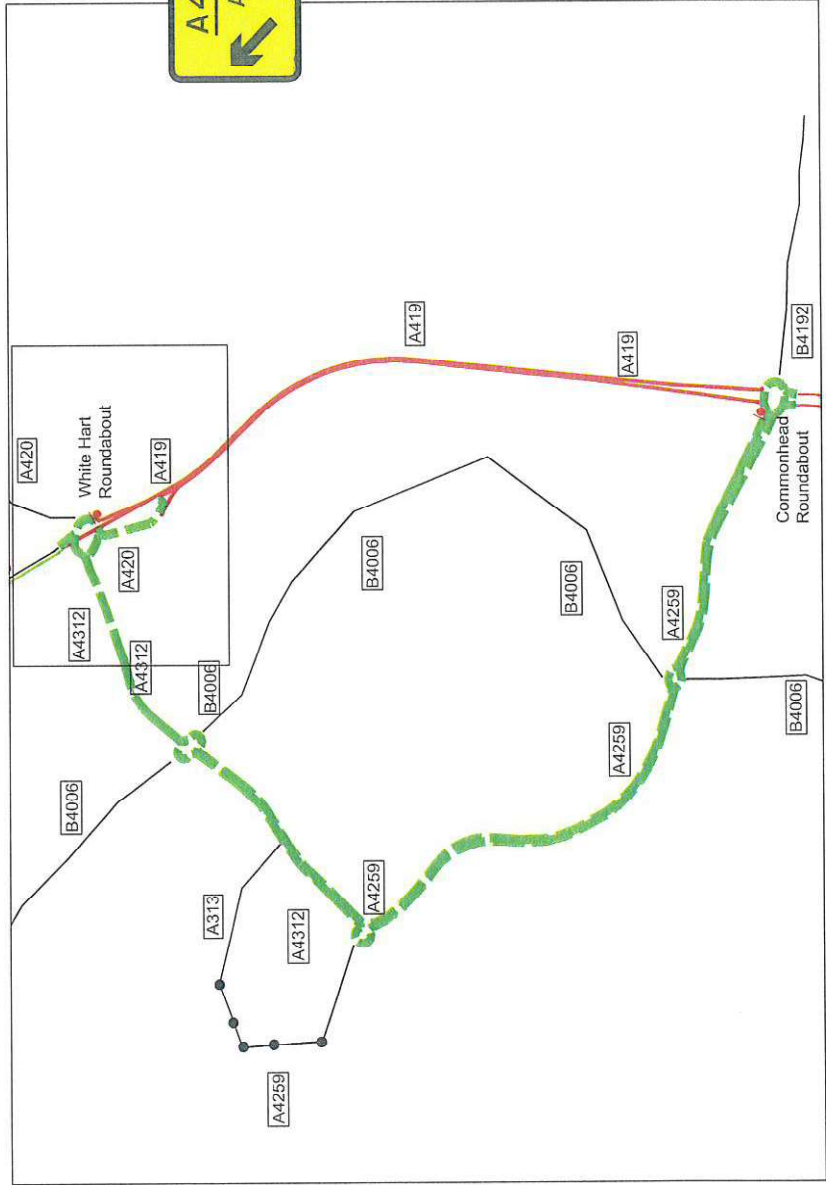
Diversion Route Symbol

**Action Points**

- Step 1: Close A419 at Southbound carriageway at White Hart roundabout junction with A419/A4312.
- Step 2: Open trigger signs at White Hart roundabout Southbound Exit Slip Road.
- Reverse procedure at end of closure.

A419 Southbound Carriageway at White Hart Roundabout.

Standard Road Closure to TMC requirements



This route was agreed as the preferred option by the following parties during 2007:  
 Highways Agency, R.M.S. Gloucestershire Police and Gloucester County Council



**ROUTE 12**

**A419 Northbound Closed  
Between  
A420 White Hart Roundabout  
And  
Turnpike Junction NB**





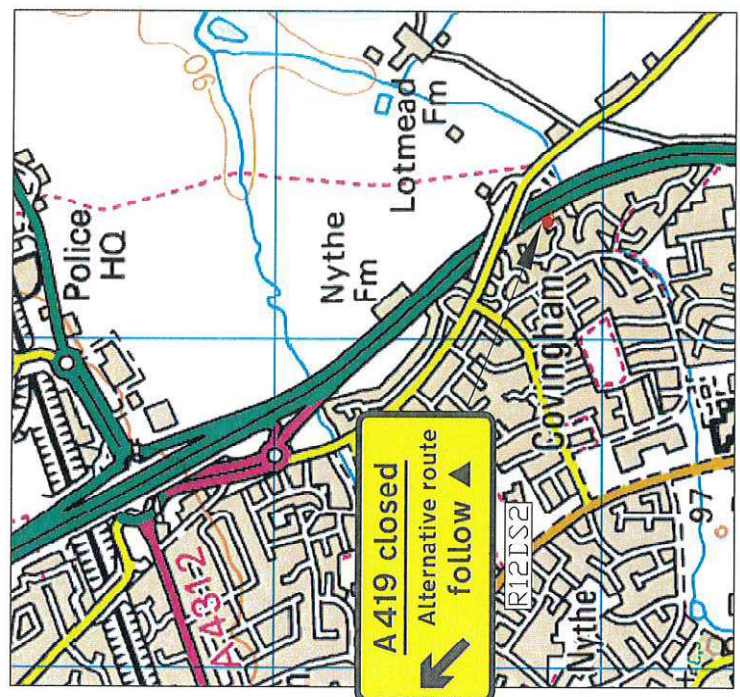
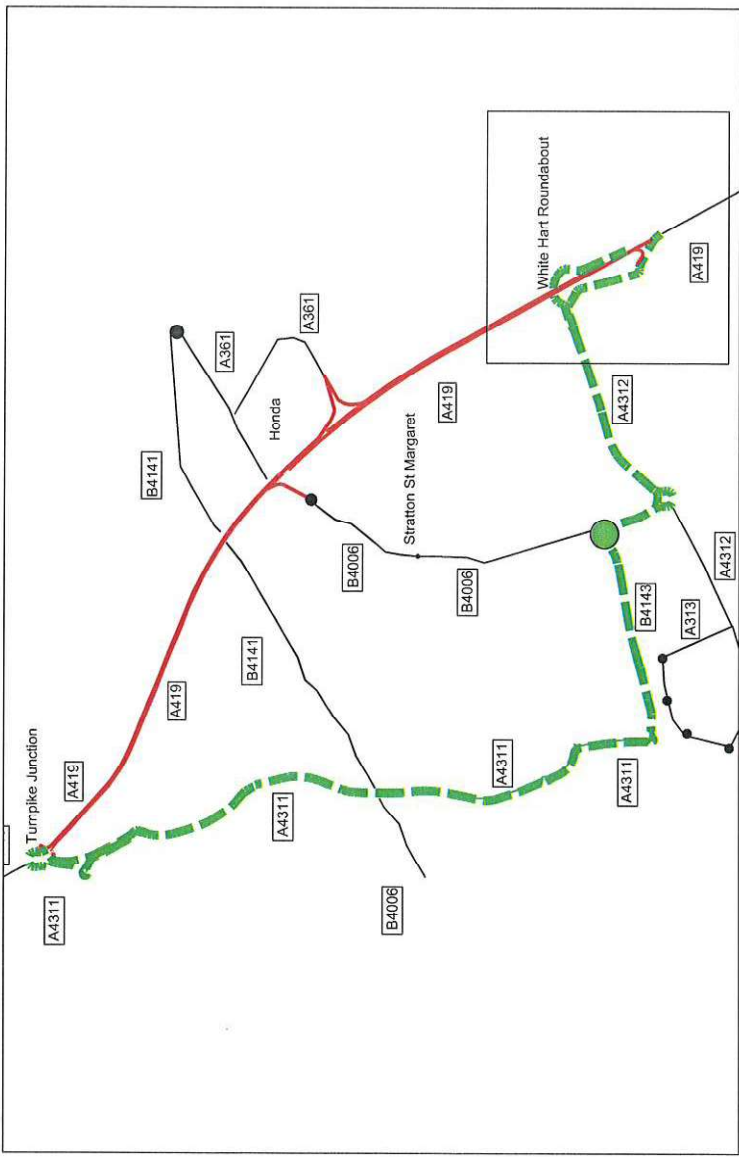
# A419 NORTHBOUND CLOSED BETWEEN WHITE HART ROUNDABOUT AND TURNPIKE JUNCTION.

**Diversion Route Symbol**



**Action Points**  
 Step 1: Close A419 at Northbound carriageway at White Hart Roundabout Junction with A420.  
 Step 2: Open trigger signs at White Hart Northbound Exit Slip Road.  
 Reverse procedure at end of closure.

A419 Northbound Carriageway at White Hart Roundabout.  
 Standard Road Closure to TMC requirements



This route was agreed as the preferred option by the following parties during 2007:  
 Highways Agency, R.M.S. Wiltshire Police and Wiltshire County Council



**ROUTE 12**

**A419 Southbound Closed**

**Between**

**Lady Lane Junction**

**And**

**A420 White Hart Roundabout**



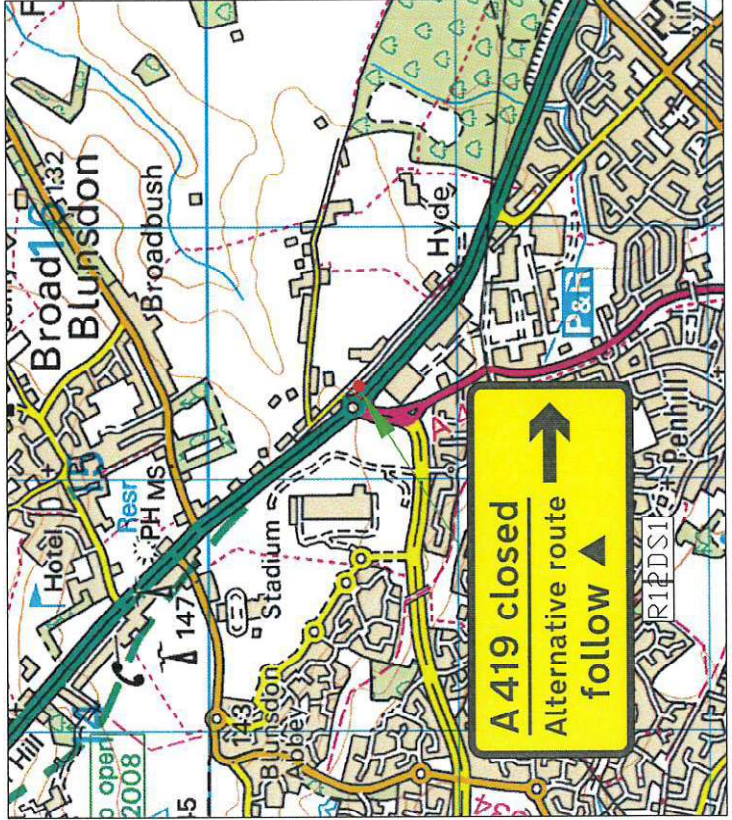
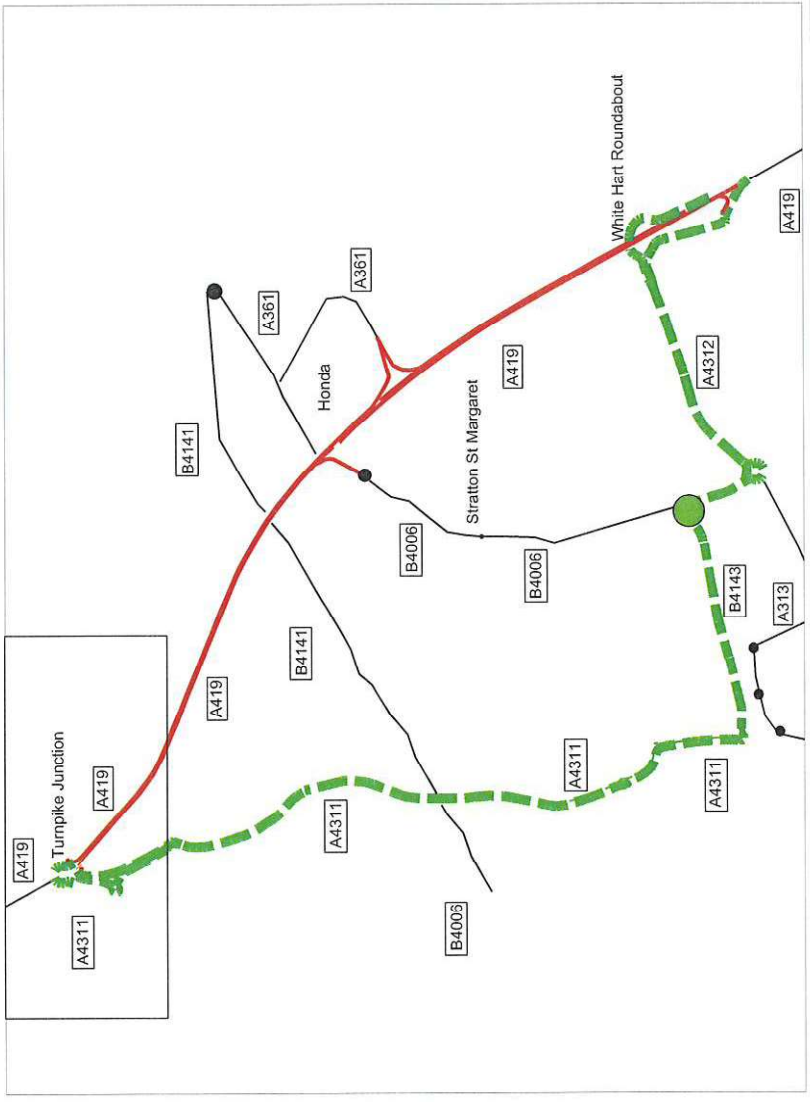
# A419 SOUTHBOUND CLOSED BETWEEN TURNPIKE JUNCTION AND WHITE HART ROUNDABOUT.

**Diversion Route Symbol**



**Action Points**  
 Step 1: Close A419 at Southbound carriageway at Turnpike Junction A4311.  
 Step 2: Open trigger signs at Turnpike Junction Southbound Exit Slip Road.  
 Reverse procedure at end of closure.

A419 Southbound Carriageway at Turnpike Junction.  
 Standard Road Closure to TMC requirements



This route was agreed as the preferred option by the following parties during 2007:  
 Highways Agency, R.M.S. Gloucestershire Police and Gloucester County Council





**ROUTE 14**

**A419 Southbound Closed**

**Between**

**Spine Road Junction**

**And**

**Lady Lane Junction**





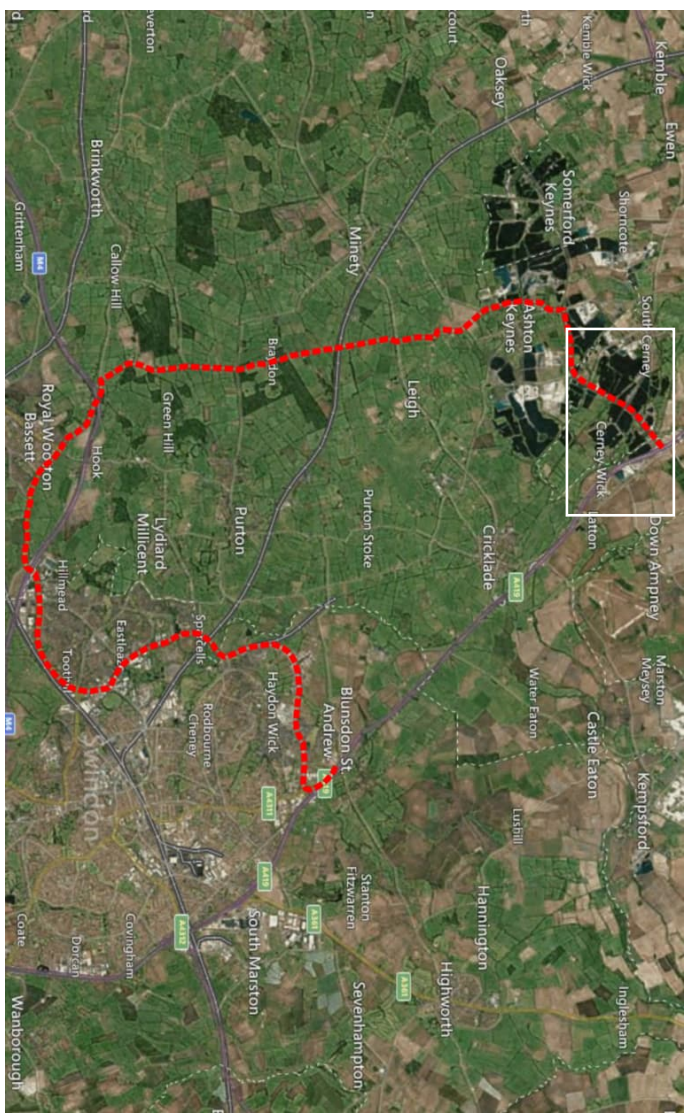
# A419 SOUTHBOUND CLOSED BETWEEN SPINE ROAD JUNCTION AND LADY LANE JUNCTION

Diversion Route  
Symbol



**Action Points**  
 Step 1: Close A419 Southbound carriageway at Cerney Junction with B4696.  
 Step 2: Open trigger signs at South Cerney Southbound Exit Slip Road.  
 Reverse procedure at end of closure.

A419 Southbound carriageway at Cerney Junction with B4696.  
 Standard Road Closure to TMC requirements



This route was agreed as the preferred option by the following parties during 2007:  
 Highways Agency, R.M.S. Gloucestershire Police and Gloucester County Council

